



GMT MONTHLY MEMBERSHIP PROGRESS REPORT

Results as of: 6/30/2024

Multiple District 325

LOCATION: NEPAL

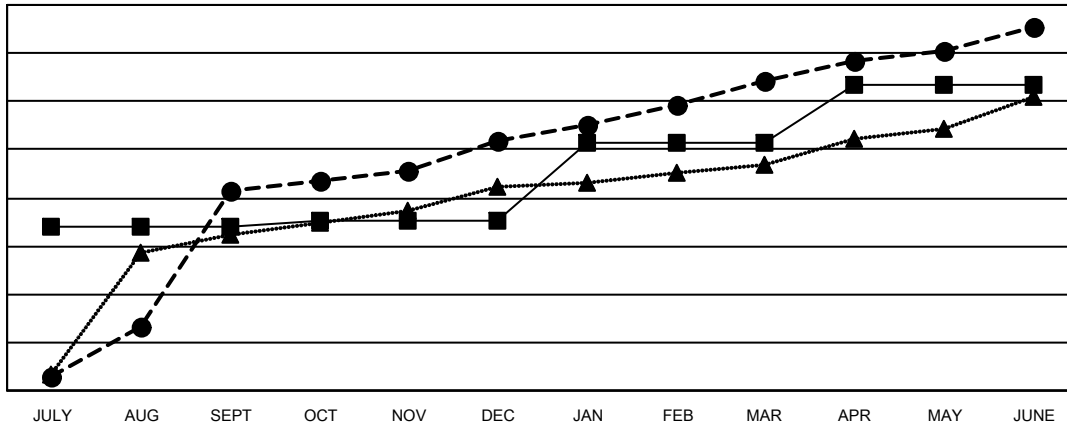
GMT: OPEN

GMT CA 6 - S

Clubs			
RESULTS FOR 2023-2024			
QUARTER	NEW CLUB GOAL	NEW CLUBS	DROPPED CLUBS
JULY/AUG/SEPT	136	166	36
OCT/NOV/DEC	5	41	120
JAN/FEB/MAR	65	50	38
APR/MAY/JUNE	47	44	87

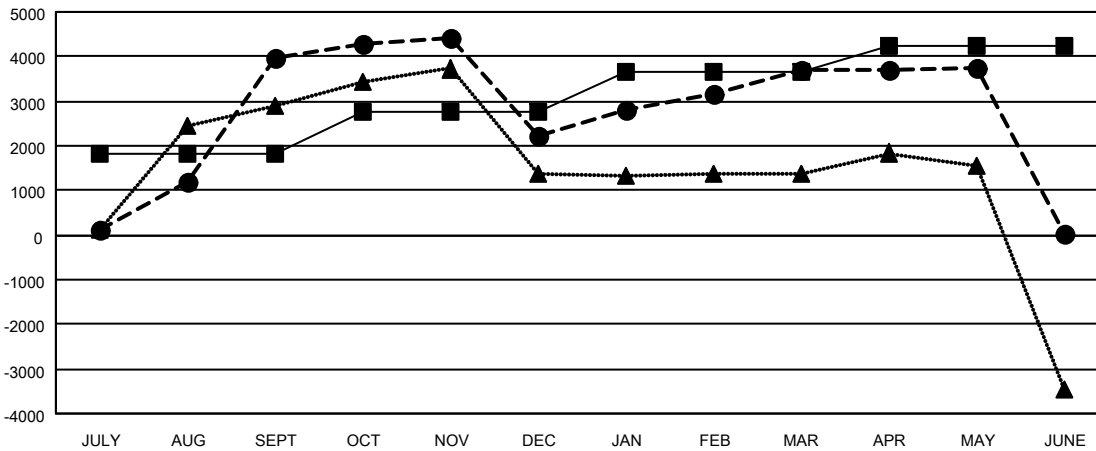
Members			
RESULTS FOR 2023-2024			
QUARTER	MEMBER GROWTH NET GOAL	MEMBER GROWTH ACTUAL	DROPPED MEMBERS ACTUAL (including transfers)
JULY/AUG/SEPT	1,804	6,399	2,198
OCT/NOV/DEC	957	2,537	4,218
JAN/FEB/MAR	879	3,144	1,409
APR/MAY/JUNE	615	2,429	5,511

GOALS AND ACTUAL NEW CLUBS CUMULATIVE



- - CURRENT YEAR GOALS FOR NEW CLUBS
- - CURRENT YEAR ACTUAL NEW CLUBS
- ▲ - LAST YEAR ACTUAL NEW CLUBS

GOALS AND ACTUAL MEMBERS CUMULATIVE



- - MEMBER GROWTH NET GOAL
- - MEMBER GROWTH ACTUAL
- ▲ - LAST YEAR MEMBERSHIP ACTUAL

DROPPED CLUBS: 279	1482 CLUBS OF 2142 ADDED 1 OR MORE NEW MEMBERS	GENDER DISTRIBUTION
		MALE 28,309 (68.68%)
		FEMALE 12,910 (31.32%)
DROPPED MEMBERS	CLICK HERE FOR CUMULATIVE MEMBERSHIP DATA	TOTAL FAMILY UNIT MEMBERS 30,599
DECEASED 41		FAMILY MEMBERS PAYING HALF DUES 21,353
CLUB CANCELLED 4,101		
OTHER 9,162		
TOTAL 13,304		